

UNDERGROUND CONDUIT CAN DO IT

MISSISSIPPI CONTRACTOR LAYS DOWN COPPER CABLE WITH HORIZONTAL BORING

Eddie Ziglar, president of AGC National Associate Member Guided Boring Inc., Jackson, Miss., began his construction career 15 years ago. Shortly after Ziglar had established his contracting business, his brother began building directional boring machines. By 1991, the two brothers bought a Ditch Witch JT8/60 horizontal boring system and founded Guided Boring. At that time, the company was one of the first in Mississippi to offer directional boring.

Today, Guided Boring has 21 employees who work statewide, completing all types of underground utility construction. Known for his hands-on management style, Eddie Ziglar can often be found working side by side with his crew. "I operate the equipment, handle the rods, dig the pits and do just about anything my guys do to get the job done," Ziglar says. That was certainly the case as Ziglar and his crew recently worked to complete a telecommunications project in Vicksburg, Miss.

The Vicksburg job required that Ziglar's crew begin boring near a South Central Bell Telephone Co. service box located just off the highway right of way near the grounds of Bunge Corp., a Vicksburg-based mill that processes soybeans and grain for export. Upon completion, the bore would approach the



The locating operator is able to track the direction of the bore using the subsite locator.

plant, cross under a railroad spur serving the mill, pass beneath a road leading to a grain truck weigh station, then terminate beside an office building scheduled to receive new phone service.

Telecommunications jobs typically present a contractor with several options for

completing the required work. In Vicksburg, there were few alternatives, however. Joining his crew at the site, Ziglar stressed, "Since this new line has to run beneath these railroad tracks, horizontal boring is the only way I can see to get it across."

EQUIPMENT AND METHODS

Ziglar's company owns two Ditch Witch JT8/60 Jet Tracs and a model R-40 backhoe/trencher. He points out, "Boring is 99 percent of the work we do. We actually do very little trenching. We just use the trencher for small jobs, and to tie in our bores."

Guided Boring transports its JT8/60 to

Working within a few hundred yards of the Mississippi River, Ziglar's operator bored about 200 feet through the site's river bottom sand in just under three hours. Thrust settings during boring operations with the JT8/60 averaged between 1,200 and 1,500 pounds. After completing the bore to the building, the crew pulled back a 1½-inch diameter

strative building.

ONGOING GROWTH

As one of Mississippi's early proponents of horizontal boring, Ziglar pointed out that he initially made extensive marketing presentations to familiarize prospective customers with the benefits of trenchless technology. Ap-

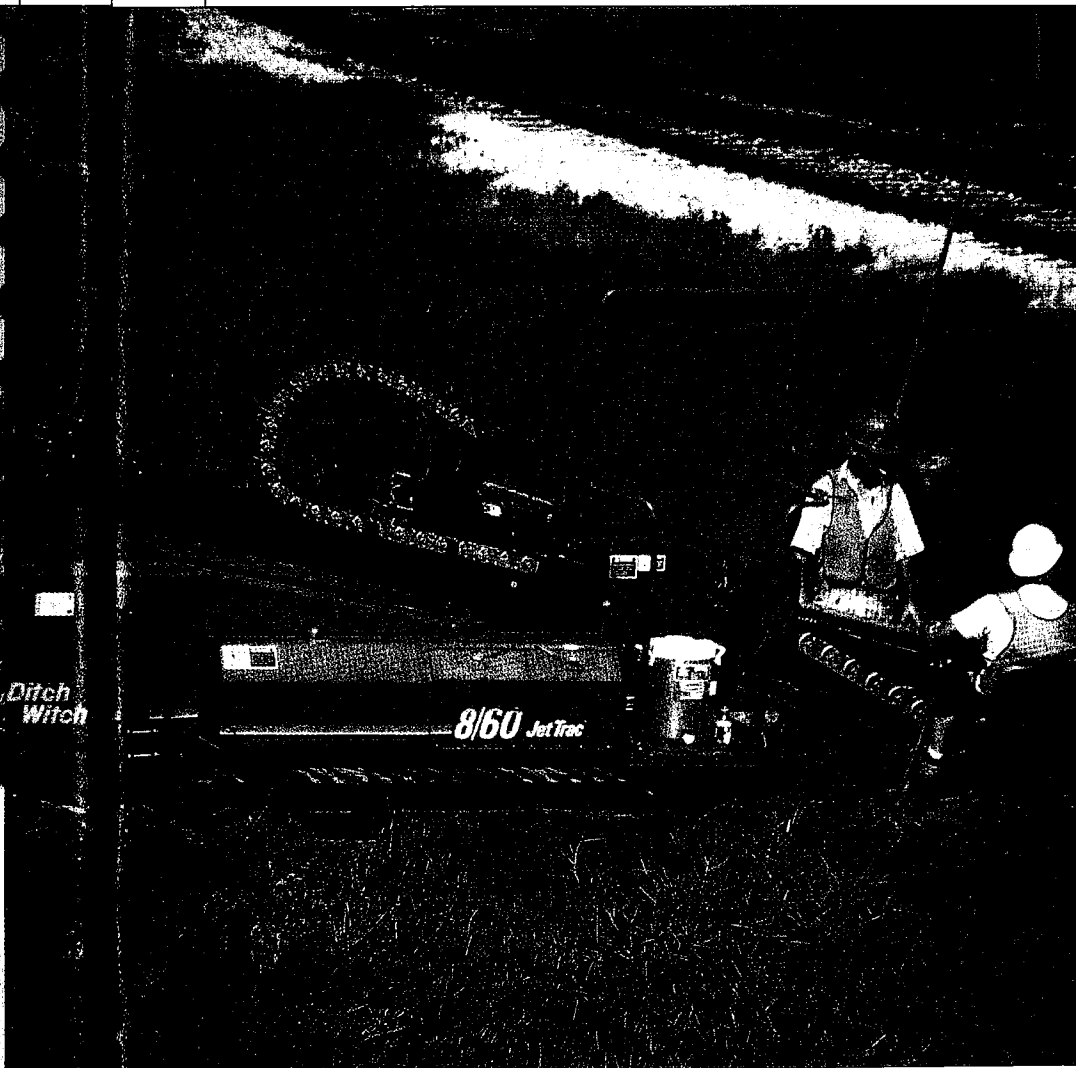
8/60 JET TRAC DIRECTIONAL BORING SYSTEM

The Ditch Witch 8/60 Jet Trac system is a compact, fluid-assisted directional boring system for making bores of 600 feet or more for the installation of underground utilities. The system includes a highly maneuverable, self-propelled drill unit mounted on tracks, 85-horsepower-class power package, and dual-tank fluid system, which mounts on a trailer or truck. It has a thrust/pullback force of 22,500 pounds and spindle torque of 1,900 foot-pounds. Depending on soil conditions, bores may be backreamed to diameters of 15 inches.

The drill connects to power and hydraulic sources with one electrical cable and one hydraulic hose. Electric-over-hydraulic controls provide smooth operation of boring and pullback functions.

Variable drilling fluid flow maximizes production and reduces secondary waste.

Controls are grouped for efficient operation. The drill unit drives its own anchor stakes to speed setup time. It has automatic pipe make-up and break-put. Ditch Witch Subsite® locating equipment is used to track the bore and provide information for steering.



Since this new line has to run beneath railroad tracks, horizontal boring is the way to get it across.

jobs on a trailer designed and built to the company's specifications. The trailer accommodates a Ditch Witch FP 85 Fluid Pac and the boring machine, as well as all drill rods, accessories, support equipment and drilling fluid additives.

polyethylene conduit without backreaming. The conduit will house the new copper conductor telephone cable scheduled for installation by Bell crews assigned to complete the installation of phone service for the mill's admini-

parently, his efforts to promote the capabilities of Guided Boring Inc. have been well rewarded. "We're steadily expanding and getting into new phases of boring. In fact, we're doing more and more work for a lot of different types of utilities including gas, water, sewer, electrical and phone," Ziglar says. □

FOR MORE INFORMATION

On Ditch Witch trenchless technology, contact Audrey Branson at Charles Machine Works Inc., P.O. Box 66, Perry, OK 73077. Phone: (800) 654-6481.

UNDERGROUND CONDUIT CAN DO IT

MISSISSIPPI CONTRACTOR LAYS DOWN COPPER CABLE WITH HORIZONTAL BORING

Eddie Ziglar, president of AGC National Associate Member Guided Boring Inc., Jackson, Miss., began his construction career 15 years ago. Shortly after Ziglar had established his contracting business, his brother began building directional boring machines. By 1991, the two brothers bought a Ditch Witch JT8/60 horizontal boring system and founded Guided Boring. At that time, the company was one of the first in Mississippi to offer directional boring.

Today, Guided Boring has 21 employees who work statewide, completing all types of underground utility construction. Known for his hands-on management style, Eddie Ziglar can often be found working side by side with his crew. "I operate the equipment, handle the rods, dig the pits and do just about anything my guys do to get the job done," Ziglar says. That was certainly the case as Ziglar and his crew recently worked to complete a telecommunications project in Vicksburg, Miss.

The Vicksburg job required that Ziglar's crew begin boring near a South Central Bell Telephone Co. service box located just off the highway right of way near the grounds of Bunge Corp., a Vicksburg-based mill that processes soybeans and grain for export. Upon completion, the bore would approach the



The locating operator is able to track the direction of the bore using the subsite locator.

plant, cross under a railroad spur serving the mill, pass beneath a road leading to a grain truck weigh station, then terminate beside an office building scheduled to receive new phone service.

Telecommunications jobs typically present a contractor with several options for

completing the required work. In Vicksburg, there were few alternatives, however. Joining his crew at the site, Ziglar stressed, "Since this new line has to run beneath these railroad tracks, horizontal boring is the only way I can see to get it across."

EQUIPMENT AND METHODS

Ziglar's company owns two Ditch Witch JT8/60 Jet Tracs and a model R-40 backhoe/trencher. He points out, "Boring is 99 percent of the work we do. We actually do very little trenching. We just use the trencher for small jobs, and to tie in our bores."

Guided Boring transports its JT8/60 to

Working within a few hundred yards of the Mississippi River, Ziglar's operator bored about 200 feet through the site's river bottom sand in just under three hours. Thrust settings during boring operations with the JT8/60 averaged between 1,200 and 1,500 pounds. After completing the bore to the building, the crew pulled back a 1½-inch diameter

strative building.

ONGOING GROWTH

As one of Mississippi's early proponents of horizontal boring, Ziglar pointed out that he initially made extensive marketing presentations to familiarize prospective customers with the benefits of trenchless technology. Ap-

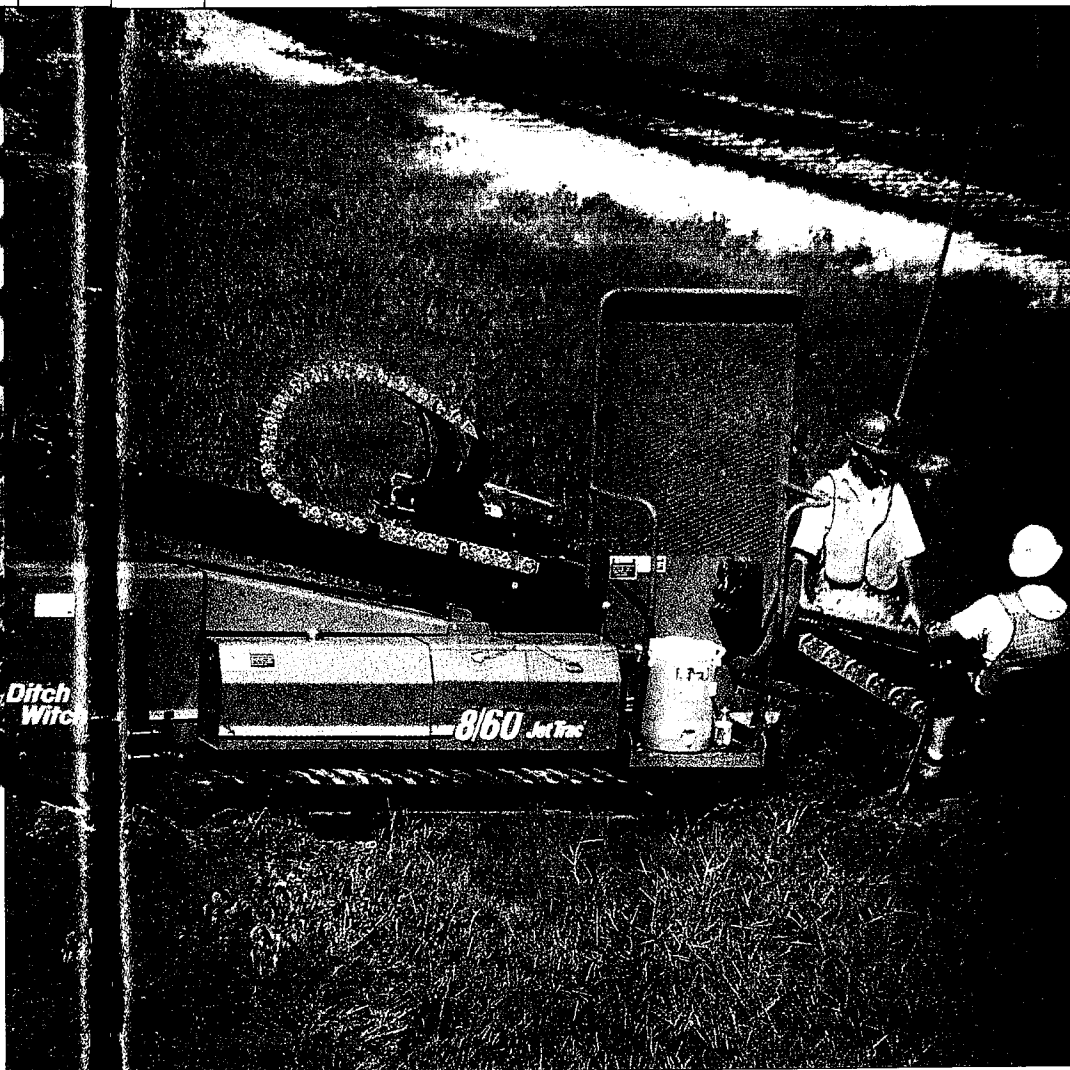
8/60 JET TRAC DIRECTIONAL BORING SYSTEM

The Ditch Witch 8/60 Jet Trac system is a compact, fluid-assisted directional boring system for making bores of 600 feet or more for the installation of underground utilities. The system includes a highly maneuverable, self-propelled drill unit mounted on tracks, 85-horsepower-class power package, and dual-tank fluid system, which mounts on a trailer or truck. It has a thrust/pullback force of 22,500 pounds and spindle torque of 1,900 foot-pounds. Depending on soil conditions, bores may be backreamed to diameters of 15 inches.

The drill connects to power and hydraulic sources with one electrical cable and one hydraulic hose. Electric-over-hydraulic controls provide smooth operation of boring and pullback functions.

Variable drilling fluid flow maximizes production and reduces secondary waste.

Controls are grouped for efficient operation. The drill unit drives its own anchor stakes to speed setup time. It has automatic pipe make-up and break-put. Ditch Witch Subsite® locating equipment is used to track the bore and provide information for steering.



Since this new line has to run beneath railroad tracks, horizontal boring is the way to get it across.

jobs on a trailer designed and built to the company's specifications. The trailer accommodates a Ditch Witch FP 85 Fluid Pac and the boring machine, as well as all drill rods, accessories, support equipment and drilling fluid additives.

polyethylene conduit without backreaming. The conduit will house the new copper conductor telephone cable scheduled for installation by Bell crews assigned to complete the installation of phone service for the mill's admini-

parently, his efforts to promote the capabilities of Guided Boring Inc. have been well rewarded. "We're steadily expanding and getting into new phases of boring. In fact, we're doing more and more work for a lot of different types of utilities including gas, water, sewer, electrical and phone," Ziglar says. □

FOR MORE INFORMATION

On Ditch Witch trenchless technology, contact Audrey Branson at Charles Machine Works Inc., P.O. Box 66, Perry, OK 73077. Phone: (800) 654-6481.

UNDERGROUND CONDUIT CAN DO IT

MISSISSIPPI CONTRACTOR LAYS DOWN COPPER CABLE WITH HORIZONTAL BORING

Eddie Ziglar, president of AGC National Associate Member Guided Boring Inc., Jackson, Miss., began his construction career 15 years ago. Shortly after Ziglar had established his contracting business, his brother began building directional boring machines. By 1991, the two brothers bought a Ditch Witch JT8/60 horizontal boring system and founded Guided Boring. At that time, the company was one of the first in Mississippi to offer directional boring.

Today, Guided Boring has 21 employees who work statewide, completing all types of underground utility construction. Known for his hands-on management style, Eddie Ziglar can often be found working side by side with his crew. "I operate the equipment, handle the rods, dig the pits and do just about anything my guys do to get the job done," Ziglar says. That was certainly the case as Ziglar and his crew recently worked to complete a telecommunications project in Vicksburg, Miss.

The Vicksburg job required that Ziglar's crew begin boring near a South Central Bell Telephone Co. service box located just off the highway right of way near the grounds of Bunge Corp., a Vicksburg-based mill that processes soybeans and grain for export. Upon completion, the bore would approach the



The locating operator is able to track the direction of the bore using the subsite locator.

plant, cross under a railroad spur serving the mill, pass beneath a road leading to a grain truck weigh station, then terminate beside an office building scheduled to receive new phone service.

Telecommunications jobs typically present a contractor with several options for

completing the required work. In Vicksburg, there were few alternatives, however. Joining his crew at the site, Ziglar stressed, "Since this new line has to run beneath these railroad tracks, horizontal boring is the only way I can see to get it across."

EQUIPMENT AND METHODS

Ziglar's company owns two Ditch Witch JT8/60 Jet Tracs and a model R-40 backhoe/trencher. He points out, "Boring is 99 percent of the work we do. We actually do very little trenching. We just use the trencher for small jobs, and to tie in our bores."

Guided Boring transports its JT8/60 to

Working within a few hundred yards of the Mississippi River, Ziglar's operator bored about 200 feet through the site's river bottom sand in just under three hours. Thrust settings during boring operations with the JT8/60 averaged between 1,200 and 1,500 pounds. After completing the bore to the building, the crew pulled back a 1½-inch diameter

strative building.

ONGOING GROWTH

As one of Mississippi's early proponents of horizontal boring, Ziglar pointed out that he initially made extensive marketing presentations to familiarize prospective customers with the benefits of trenchless technology. Ap-

8/60 JET TRAC DIRECTIONAL BORING SYSTEM

The Ditch Witch 8/60 Jet Trac system is a compact, fluid-assisted directional boring system for making bores of 600 feet or more for the installation of underground utilities. The system includes a highly maneuverable, self-propelled drill unit mounted on tracks, 85-horsepower-class power package, and dual-tank fluid system, which mounts on a trailer or truck. It has a thrust/pullback force of 22,500 pounds and spindle torque of 1,900 foot-pounds. Depending on soil conditions, bores may be backreamed to diameters of 15 inches.

The drill connects to power and hydraulic sources with one electrical cable and one hydraulic hose. Electric-over-hydraulic controls provide smooth operation of boring and pullback functions.

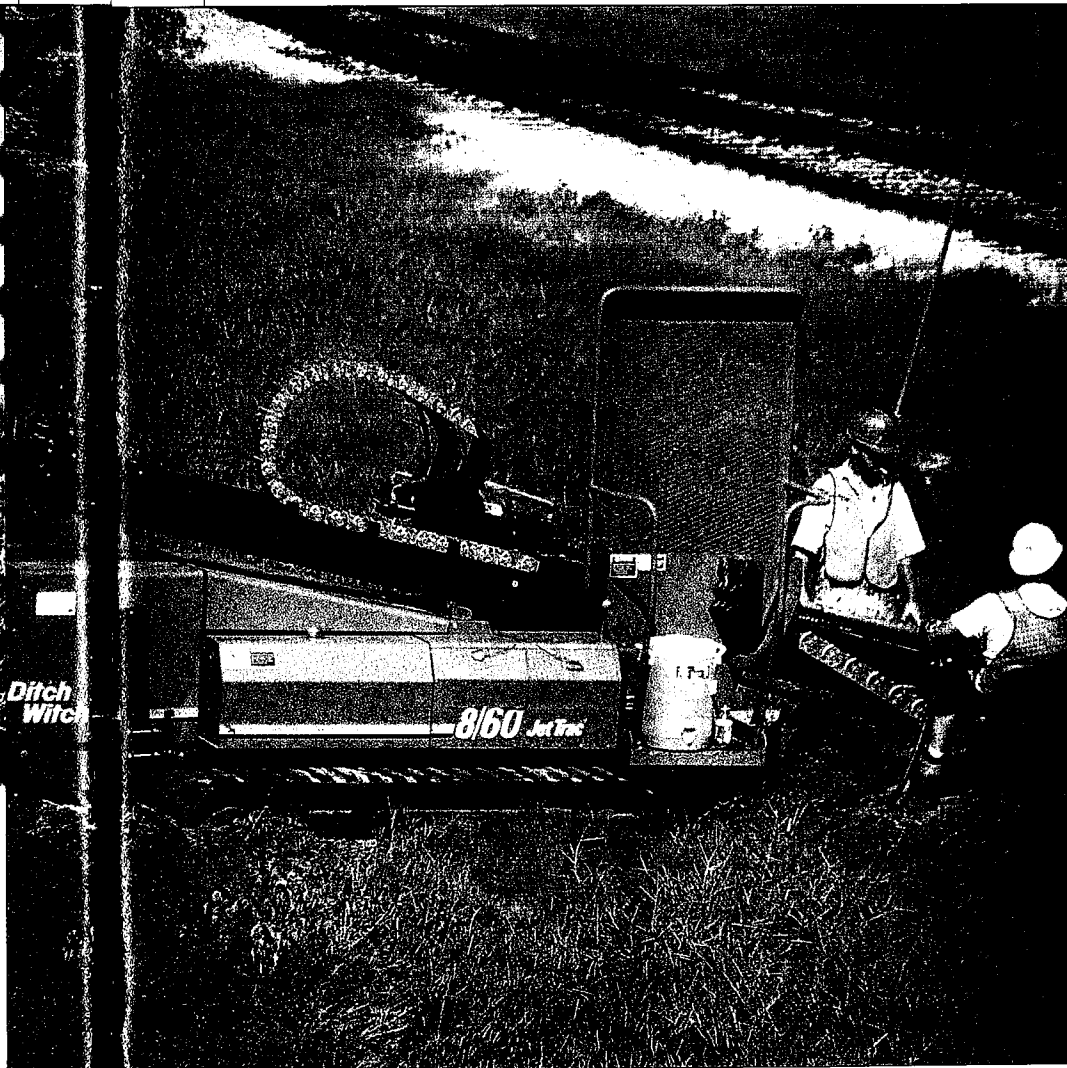
Variable drilling fluid flow maximizes production and reduces secondary waste.

Controls are grouped for efficient operation. The drill unit drives its own anchor stakes to speed setup time. It has automatic pipe make-up and break-put. Ditch Witch Subsite® locating equipment is used to track the bore and provide information for steering.

parently, his efforts to promote the capabilities of Guided Boring Inc. have been well rewarded. "We're steadily expanding and getting into new phases of boring. In fact, we're doing more and more work for a lot of different types of utilities including gas, water, sewer, electrical and phone," Ziglar says. □

FOR MORE INFORMATION

On Ditch Witch trenchless technology, contact Audrey Branson at Charles Machine Works Inc., P.O. Box 66, Perry, OK 73077. Phone: (800) 654-6481.



Since this new line has to run beneath railroad tracks, horizontal boring is the way to get it across.

jobs on a trailer designed and built to the company's specifications. The trailer accommodates a Ditch Witch FP 85 Fluid Pac and the boring machine, as well as all drill rods, accessories, support equipment and drilling fluid additives.

polyethylene conduit without backreaming. The conduit will house the new copper conductor telephone cable scheduled for installation by Bell crews assigned to complete the installation of phone service for the mill's admini-